

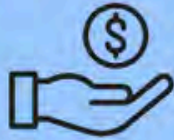
# MY CITY, MY NEWS



City of  
Philadelphia

One Philly, A Connected City.

May 5, 2025



Base Salary



Longevity



Paid Time Off

## TOTAL COMPENSATION

Pension



Health Benefits



Health Insurance



## Coming Soon to OnePhilly...

By **OnePhilly** and the **Office of Human Resources**

OnePhilly and the Office of Human Resources are pleased to announce two upcoming updates to your OnePhilly account: **Total Compensation Statements** and **Preferred Name Selections**.

The **Total Compensation Statement** will allow you to view not only your base salary but also the explicit monetary value of your benefits as a City employee, including:

- Health insurance and benefits
- Pension contributions
- Paid time off
- Longevity benefits
- And more!

Additionally, you will soon have the ability to designate a preferred name via OnePhilly Self Service. **Preferred Name Selection** will ensure that your profile reflects the way you wish to be identified.

**OnePhilly** and the **Office of Human Resources** are committed to continually improving your employee experience. We hope that these new features convey our appreciation and dedication to creating an inclusive work environment.

Look out for more information in your inbox!

### This Month We Recognize:

Mental Health Awareness Month, American Stroke Awareness Month, AAPI Heritage Month, Jewish American Heritage Month, and more!

Follow us on Social Media

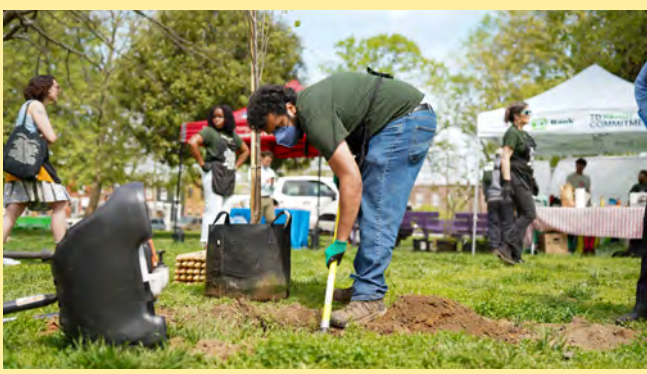
@PhilaOHR

Submit something to the newsletter

[bit.ly/philaCitynews](https://bit.ly/philaCitynews)

Contact us with HR questions

hrhelpdesk@phila.gov or 215-686-0880



## TEN PROJECTS FOR A GREENER PHILLY!

Mayor Parker is committed to enhancing outdoor spaces for better health and quality of life. In partnership with Clean Air Council – Feet First Philly, the Health Department awarded mini grants to 10 community projects improving the City's outdoor environment.

Funded projects include greening, infrastructure, art, and security initiatives, targeting high-need areas.

[Learn more!](#)



## BOOK A SESSION WITH PHL SERVICE DESIGN STUDIO

The PHL Service Design Studio collaborates with staff and residents to improve City services and programs. The team offers office hours, consulting, and hands-on project support to City colleagues who are working to improve City services and programs to be more accessible, equitable, and trauma responsive.

Book an office-hour or submit a request to work with the Studio.

[Book a session!](#)



## SHAPE PHILLY'S ARTS AND CULTURE

For the first time, Philadelphia is investing in a cultural plan shaped by its residents. This effort is a collaboration between the people of Philadelphia and Creative Philadelphia. Let's work together to ensure arts and culture continue to grow, thrive, and become accessible to all.

Join us at an Arts & Culture Planning Session, coming to your district soon. Find your session, and sign up today!

[Find your session!](#)



## LET'S GET ETHICAL!

The Board of Ethics wants to make sure all City officers and employees are compliant with the ethics training requirements. As a reminder, training is required for all newly hired City employees within the first 90 days of hire. For most other employees, training is required every five years. High level City officials must receive training annually. If you were hired in a year ending in 0 or 5 (2020, 2015, 2010, 2005, etc.), you are due for training this year!

[Register today!](#)



Philly youth celebrate Arbor Day with tree planting in Mifflin Square.



The inaugural Phambassadors Program launch at LOVE Park.



# STAY CONNECTED

## PHILLY FREE WI-FI AND DASHBOARD

The Wi-Fi Finder includes all locations that provide free, public Wi-Fi at city locations.

This includes:

- All Free Library of Philadelphia locations
- Recreation Centers
- Older Adult Centers
- And other parks or city buildings

With the Wi-Fi Finder, you can search by **ZIP CODE** or by location to see which locations have public Wi-Fi near you.

## Who is working successPhilly?

### *Celebrating the Office of Innovation and Technology*

The Office of Innovation and Technology (OIT) has announced the launch of their **Philly Free Wi-Fi Finder**. The service allows Philadelphians to locate free and reliable Wi-Fi at over 180 sites around the city. Users can search by zip code or specific location to find nearby Wi-Fi access, helping Philadelphians stay connected to vital digital services.

This project is the latest in the City's efforts to achieve digital equity, ensuring that all Philadelphia residents have the tools to succeed in an increasingly online world. It reflects the mission of DigitalEquityPHL, a team dedicated to the goal of access to internet, affordable devices, and technological competency for all Philadelphians.

Home Wi-Fi is not affordable for every resident of Philadelphia, and public Wi-Fi is not always reliable. By simplifying the process of locating free and reliable internet near the home, OIT provides an essential service that directly affects Philadelphia's social and economic future.

**Try the Philly  
Free Wi-Fi Finder**

#### Find free City Wi-Fi

The City offers free Wi-Fi at many recreation centers, older adult centers, parks, and libraries. Over 180 locations are part of a [franchise agreement between the City and Verizon](#) to install high-speed broadband and public Wi-Fi for residents over two years.

To find a free Wi-Fi location:

- Filter by the services you need.
- Select the location on the map for details.
- Search an address or ZIP code to find locations near you.

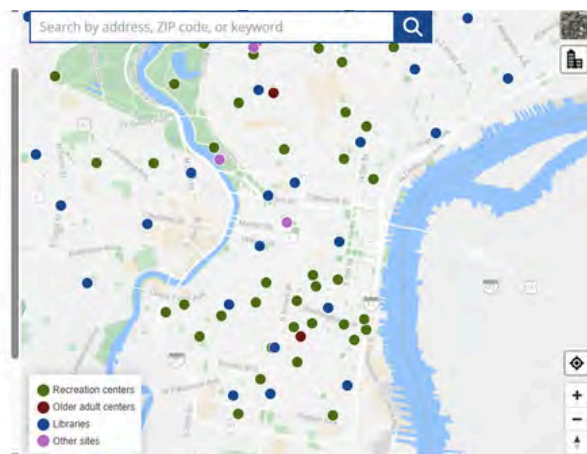
[VIEW LIST](#)

#### Computer services

Some locations have computers available for public use. Computers may only be available for specific programs or at specific times.

#### Learn more

Explore [how to log on to free public Wi-Fi](#) in Philadelphia.



# Making It Happen: Upcoming Events!

## Roxborough Spring Fest

Roxborough Development Corporation

May 10, 2025 | 11 a.m.

Ridge Avenue - Green Ln to Fountain St

Bring your family and friends to enjoy live music across three stages, view art and handicrafts by more than 50 local artisans, and sample treats from award-winning food trucks while sipping beverages from Pennsylvania's own New Ridge Brewing Company. Spring Fest also offers fun for all ages with a dedicated Kid's Zone, a student art showcase, and other family-friendly activities. [Learn more!](#)

## The MOVE Bombing: In Remembrance 40 Years Later

Citizens Police Oversight Commission

May 12, 2025 | 7:30 p.m.

Proscenium Theater at the Drake

CPOC is hosting a commemorative night to honor the 40th anniversary of the MOVE bombing, a pivotal moment in the history of Philadelphia and police brutality. The event will feature powerful monologues from plays "6621" and "The Rant" that reflect on the tragedy in West Philadelphia, followed by a conversation with Michael Africa Jr., and concluding with a panel discussion with journalists that covered the event. [Register here!](#)

## Mother's Day Community Baby Shower

Citizens Police Oversight Commission

May 15, 2025 | 2 p.m.

The Core building, 3222 H Street

Please join CPOC, Shalom, Inc, and the 24th Police District in celebrating Mother's Day with a Community Baby Shower on Thursday, May 15, 2025, from 2-5pm at The Core building on 3222 H Street, Philadelphia, PA 19134. We will be located on the 4th floor. Join us for an amazing time filled with food, games, resources, and giveaways! [Sign up!](#)

## 2nd Annual EcoFair

Green Philly

May 17, 2025 | 12 p.m.

Cherry Street Pier

Join EcoFair, Green Philly's annual family-friendly event celebrating sustainability. Explore local eco-initiatives, enjoy inspiring workshops, storytelling, art by Walls for Justice, and a Sustainable Marketplace. Connect with nonprofits and like-minded people while learning how to make a positive impact. Don't miss this fun, educational day for all!

[RSVP!](#)

## Civic Engagement Academy (CEA) Centering Accessibility and Inclusion

Office of Community Empowerment and Opportunity

May 21, 2025 | 6 p.m.

Virtual - Zoom

The Civic Engagement Academy (CEA) Learning Series provides community members with the tools to create lasting positive change. The trainings encourage local problem-solving and prepare residents to become community leaders, organizers, and activists. In this training, we'll offer guidance on how organizations can ensure that every unique individual feels welcomed and empowered to participate.

[Register today!](#)

## Family Medical Leave: What It's All About

Silver Collaborative Community Resource Group

May 22, 2025 | 12 p.m.

Virtual - Teams

Come learn about the Family Medical Leave Act (FMLA). If you want to understand the purpose of FMLA, and how an employee may apply FMLA, come to this informative session, and bring your questions!

Please email [Tracy.Jones@phila.gov](mailto:Tracy.Jones@phila.gov) if you would like to be invited to the Teams Meeting.

## Philly Pride Flag Raising

Philly Pride 365

May 30, 2025

Various Locations

Pride Weekend kicks off with Pride Around the City, a powerful display of LGBTQ+ visibility and unity as we unfurl the largest Pride flag in Philadelphia's history! This year, the flag has grown to an incredible 600 feet long, and we'll carry it through iconic locations across the city starting at the Art Museum and ending in the Gayborhood!

Sign up to hold a section of the 600 foot long Pride flag! Email

[logistics@phillypride365.org](mailto:logistics@phillypride365.org)

## 4th Annual Autism 365 Resource Fair

Free Library of Philadelphia - Wynnefield Branch

May 31, 2025 | 10 a.m.

5325 Overbrook Ave

The Wynnefield Library is having their 4th Annual Autism 365 Resource Fair for all communities in the City of Philadelphia. There will be 10+ vendors providing information on their organizations. This is a family fun day also, with games and prizes for the kids (or adults if they want to play) and crafts. [Learn more!](#)

## We Walk PHL Spring Season

Department of Public Health

Parks and Recreation

May 1-June 30, 2025

Various Locations

We Walk PHL is a free walking group that meets several times per week. All walks are led by a team of community volunteers. Launched as a pilot program in 2017 at 3 parks, this program has expanded to over 25 locations at parks and rec centers across Philadelphia. We Walk PHL is a partnership between Fairmount Park Conservancy, the Philadelphia Department of Public Health and Philadelphia Parks and Recreation. [Learn more!](#)

## Love Your Park Week 2025

Parks and Recreation

May 10-18, 2025

Various Locations

Get involved in Philly's parks! From regular volunteer workdays to citywide celebrations and year-round community organizing, Love Your Park brings Philadelphians together to clean, green, and celebrate our public green spaces. Park Friends Groups across the city will be hosting events and volunteer cleanups for Love Your Park Week 2025.

[Get involved!](#)



**Correction:** In the April 21 newsletter, Director Carlton Williams (left), from the Office of Clean and Green Initiatives, was mislabeled as Commissioner Carlton. Director Williams and Sanitation Commissioner Crystal Jacobs Shipman (right) are pictured at Sanitation's Milestones Employee Appreciation Luncheon.

**Follow us on Social Media**

@PhilaOHR

**Submit something to the newsletter**

[bit.ly/philaCitynews](http://bit.ly/philaCitynews)

**Contact us with HR questions**

[hrhelpdesk@phila.gov](mailto:hrhelpdesk@phila.gov) or 215-686-0880



# Employee Resources

## [Employee.phila.gov](https://employee.phila.gov)

Employee.phila.gov is a new online resource designed to support City employees. This hub brings together essential information in one easy-to-access location! Need details on benefits, workplace policies, or well-being programs? The hub site has you covered with clear, up-to-date information. The site also provides tools to help you share career opportunities with friends, family, and community members who may be interested in joining the City workforce. [Explore the page!](#)

## CITY RESOURCE GROUP MEETINGS

City Resource Groups (CRGs) create employee-led spaces to support diverse communities and allies, helping make the City a more inclusive workplace. CRGs offer networking, leadership opportunities, and skill-building through professional development. Members also collaborate with the Office of DEI to support departmental diversity goals. [Learn more about CRGs](#) or email CRG@phila.gov to join or get involved.

## CITYWIDE IT TRAINING

The Office of Innovation & Technology contracts with several vendors to provide information technology training. This is available on site, hands-on, and interactively to all City Departments. The Order Form and the Course Catalog are posted on the Office of Innovation and Technology Intranet, see Forms and Document Page. Please note that all training requires the approval of both the department's authorized personnel and fiscal agent. [VIEW AVAILABLE COURSES](#)

## LANGUAGE ACCESS PHILLY

All City departments must have a Language Access Plan (LAP) to ensure residents with non-English language preference (NELP) can access services for free.

Language Access Philly connects departments with interpretation and translation services to support multilingual communities. Need help? Contact your Language Access Coordinator or [visit the Language Access Philly resource page](#).

## RESIDENT ENGAGEMENT FUND

**Resident Engagement Fund:** City departments seeking funding to pay residents during community engagement activities can apply through the Resident Engagement Fund, administered by the Office of the Chief Administrative Officer. [LINK HERE](#) or email [ResidentComp@phila.gov](mailto:ResidentComp@phila.gov)

## DISABILITY ACCESS RESOURCES

The City of Philadelphia is committed to making City services accessible to all residents, including people with disabilities. Through policies, programs, and resources, the Office for People with Disabilities works to support inclusion and access. Explore accessible spaces, disability data, systems navigation videos, and key policies. Learn more on [the website](#) and contact the Office for support.

## CITY INTRANET

Receive updates and access City resources like central duplication, an updated org chart, and updates on employee benefits and programs! All announcements listed here are also posted to the City's Intranet. Please note, you must be connected to either City Wi-Fi, LAN, or through approved VPN to access. [CHECK IT OUT](#)

## READYPHILADELPHIA

Stay connected to the weather forecast and important information from the City, directly to your phone! The city's emergency notification system is now available in 11 languages including American Sign Language. Text READYPHILA to 888777 to receive alerts to your device or sign up with your preferred language by visiting our ReadyPhiladelphia [webpage](#) for phone and text alerts. [SIGN UP FOR ALERTS](#)

## CITY COLLEGE FOR MUNICIPAL EMPLOYMENT

Have you seen the new homepage for the City College for Municipal Employment? Check it out on [phila.gov](https://www.phila.gov) and explore some of the options and details! <https://www.phila.gov/programs/city-college-for-municipal-employment-ccme/>

## LEARNING MANAGEMENT SYSTEM

NEW self-care and mental health resources for employees coping with the impact of COVID-19 are now available on the LMS, in addition to a variety of training and career development resources. Simply visit the Knowledge Base on the LMS for more information on COVID-19 Employee Self-Care. [ACCESS THE LMS](#)

## DISCLAIMER

This is a citywide newsletter, distributed to all employees with a [phila.gov](https://www.phila.gov) email address. Attendance at events during work hours must be approved by your supervisor. Occasionally, some information you receive may be applicable only to a certain group of employees, like exempts. We will clearly label such information, but if you have questions, please contact your HR administrator. Any special citywide discounts have been approved in advance by the Chief Integrity Officer and are available to all City employees who are interested.

Reference in this newsletter to any specific commercial product, process, or service, or the use of any trade, firm or corporation name is for the information and convenience of City employees, and does not constitute endorsement, recommendation, or favoring by the City of Philadelphia.