

# MY CITY, MY NEWS



City of  
Philadelphia

One Philly, A Connected City.

April 7, 2025



## CCME Workforce and Professional Development TRAINING DIRECTORY

### The CCME Training Directory can help you grow your career

*By the Office of the Chief Administrative Officer*

Just in time for Mayor Parker's Budget Town Halls, the City College for Municipal Employment (CCME) has released the **Workforce and Professional Development Training Directory!**

This 40-page guide helps you and your family explore programs to grow your career and education—starting as early as middle school.

The City is investing in its workforce. Mayor Parker launched CCME to expand access to good jobs and opportunities for residents.

In October 2024, CCME and the Community College of Philadelphia started the Bridge to City Employment program. CCME also created Upskilling programs to help current City workers grow their careers.

The Training Directory highlights all CCME programs, plus youth jobs, internships, adult education, and professional development. There's something for everyone.

Whether you're in high school, already working for the City, or looking for a new path—this is your chance to grow and succeed.

#### This Month We Recognize:

National Volunteer Month, National Minority Health Month, Second Chance Month, Sexual Assault Awareness Month, Autism Acceptance Month and more!

Follow us on Social Media

@PhilaOHR

Submit something to the newsletter

[bit.ly/philacitynews](https://bit.ly/philacitynews)

Contact us with HR questions

hrhelpdesk@phila.gov or 215-686-0880



## BECOME A CULTURE CHAMPION!

Passionate about shaping a better workplace? The Office of the Chief Administrative Officer (CAO) is launching the Culture Champions Program—a network of City employees dedicated to engagement, collaboration, and workplace growth.

Our first meeting is coming soon!

Email [caoculture@phila.gov](mailto:caoculture@phila.gov) to join the movement.

[CAO](#)



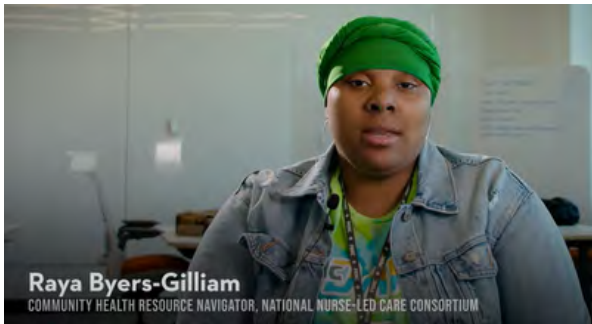
## IMMIGRANT HERITAGE MONTH EVENT SUBMISSION !

The Office of Immigrant Affairs will be hosting the annual Immigrant Heritage Month this June!

If you are interested in hosting an event in collaboration with the Office of Immigrant Affairs, please complete the Event Submission form below!

Thank you! For any questions, please reach out to [Ngan.Tran@phila.gov](mailto:Ngan.Tran@phila.gov).

[Submission Form](#)



## NEW VIDEO HIGHLIGHTS INTERSECTION OF INTIMATE PARTNER VIOLENCE AND GUN VIOLENCE

While intimate partner violence is always risky, guns make it especially dangerous. A new video from Shared Safety shares how medical professionals can connect with patients about these serious issues.

Shared Safety is a coordinated community response to relational violence in Philadelphia, bringing together City agencies and community organizations to improve health and human services systems.

[Watch the Video](#)



## NEW SPRING 2025 EMPLOYEE TRAINING CATALOG

The new Spring 2025 Employee Training Catalog is now available on the Intranet.

New courses have been added to include the new Building Inclusive Work Environment course which replaces the DEI for Supervisors and Managers course.

Check out the new catalog below for more information.

[Spring Training Catalogue](#)



Mayor Cherelle Parker delivers her "One Philly 2.0" Fiscal Year 2026 Budget Address to City Council on March 13, outlining priorities for a safer, cleaner, greener Philadelphia with access to economic opportunity for all.



High school students are sworn in during PAL Day at City Hall on March 20. The annual event, hosted by the Police Athletic League, gave 15 Juniors and seniors the chance to step into city government roles and shadow City officials.



Community member holding signs that say "LOVE" in rainbow colors at the Trans Day of Visibility Flag-Raising on March 31.





## PRISONS DEPARTMENT ACHIEVES STAFFING RECORD AND RETENTION RATES

The Philadelphia Department of Prisons is growing stronger, with 230 correctional officers hired since April 2024—the largest cadet class in over a decade.

Attrition has dropped to a record low of 2%, and retention is on the rise.

Under Commissioner Resnick's leadership, PDP has improved recruitment, opened a new Training Academy, and is enhancing staff support with mentoring and a new fitness center.

[Learn More!](#)



## CITY LAUNCHES LATEST ROUND OF CORRIDOR ENHANCEMENT GRANT

The Department of Commerce launched the Corridor Enhancement Grant to support neighborhood economic development and vibrant commercial areas.

Nonprofits enhancing business district appearance, safety, and livability can apply for grants between \$10,000 and \$40,000.

Deadline: April 14, 2025, at 11:59 p.m.

[Learn More!](#)



## CPOC SPRING TOILETRY DRIVE

The Citizen's Police Oversight Committee (CPOC) is partnering with Redeemed For A Cause for our Spring Toiletry Drive! The collection drive will run from April 1st-May 5th!

The items will be distributed at a Community Baby Shower event in May and to the young girls currently in WRAP court. Check out our wish list and stay tuned for more details about the community baby shower!

[CPOC Toiletry Drive](#)



## INVITE PHILAREVENUE TO YOUR NEXT COMMUNITY EVENT!

The Philadelphia Department of Revenue's Outreach Team is interested in partnering with you.

Our team is ready to assist with presentations on our valuable property tax and water bill assistance programs, provide informative tabling to connect residents with our resources, and conduct workshops to help customers and taxpayers enroll in assistance programs such as the Homestead Exemption and more!

[Learn More!](#)



On March 21 Mayor Cherelle L. Parker announced seven appointments to fill key roles in various departments and agencies, including the Office of LGBTQ+ Affairs, the Procurement Department, Public Property, Department of Planning and Development, and the new Office of Business Impact and Economic Advancement



A program booklet for the City of Philadelphia Streets Department Employee Milestone Appreciation Event held on March 27.



# Making It Happen: Upcoming Events!

## Philly Jazz Month

*Creative Philadelphia*  
April 1-30, 2025  
Various Locations

Experience the vibrant rhythms and rich heritage of jazz during Philly Jazz Month 2025, a citywide celebration happening from April 1st to 30th. This inaugural event, co-presented by Creative Philadelphia and Mid Atlantic Arts, honors Philadelphia's profound jazz legacy and its dynamic present. [See the full schedule of events!](#)

## Sexual Assault Awareness Month Events

*Office of Domestic Violence Strategies*  
April 1-30, 2025  
Various Locations

Join the Office of Domestic Violence Strategies and community partners in recognizing April as Sexual Assault Awareness Month (SAAM). During SAAM, we uplift awareness and prevention of sexual violence, harassment, and abuse. [Learn about local resources and events](#) where you can get involved during SAAM and beyond!

## Honoring Second Chance Month

*Office of Reentry Partnerships*  
April 1-30, 2025  
Various Locations

In honor of Second Chance Month, the City of Philadelphia's [Office of Public Safety \(OPS\)](#) and [Office of Reentry Partnerships \(ORP\)](#) are hosting a series of local events in April. Returning citizens, and those who want to support returning citizens and contribute to their successful reentry can join us for any of the events happening this month. [Learn more!](#)

## SEA Market Opens!

*Philadelphia Parks & Recreation*  
April 5, 2025 | 10 a.m.  
FDR Park, 1500 Pattison Avenue

The [Southeast Asian Market](#) in FDR Park is a community of refugees and immigrant members who have called the Franklin Delano Roosevelt (FDR) Park their home since the 1980's. For 35+ years they have cultivated an open community space all their own. Here you can enjoy many native cuisine dishes, culturally specific produce, plants, clothing and jewelry, as well as services provided by entrepreneurs speaking multiple languages.

## CEA Learning Series, Government 102

*CEO*  
April 16, 2025 | 6 p.m.  
Virtual - Zoom

The Civic Engagement Academy (CEA) Learning Series provides community members with the tools to create lasting positive change. The trainings encourage local problem-solving and prepare residents to become community leaders, organizers, and activists. At the next training learn how the Federal State and Local government work and the importance of primary elections! [Sign up here!](#)

## Lincoln Financial Field Full-Scale Exercise

*Office of Emergency Management*  
April 23, 2025 | 9 a.m.  
Lincoln Financial Field

On April 23 the office of Emergency Management (OEM) on behalf of the Philadelphia Eagles, FIFA, and Cybersecurity and Infrastructure Security Agency (CISA) will be holding a Full-Scale Exercise at Lincoln Financial Field to bring facility personnel, local first responders, state, federal, and other partners together to perform response actions after a simulated incident. [We are seeking volunteers interested in being actors at the exercise.](#)

## Serve Philadelphia VISTA Corps Open House

*CEO*  
April 28, 2025 | 1 p.m.  
TBA

The [Serve Philadelphia VISTA program](#) is hosting open houses to share information about the program, the application process, and available VISTA positions for the 2025-2026 service term. Join us to meet current VISTA members and staff and to learn more about this incredible opportunity to develop your career while supporting Philadelphians. [Learn more and spread the word!](#)



A Student speaks at the Mayor's Office of Black Male Engagement's Brotherhood Empowerment Series event held on April 1.



Attendees at the Women's History Month Event on March 27 raise their hands for One Philly during the gathering at City Hall.



At the Will Smith Street Naming Ceremony on March 26 the actor and City Council celebrate the renaming of 59th Street to "Will Smith Way"



Tyrell Brown, the new Director of LGBTQ+ Affairs, speaks at the 2025 Trans Day of Visibility Flag-Raising on March 31.

Follow us on Social Media

@PhilaOHR

Submit something to the newsletter

[bit.ly/philaCitynews](https://bit.ly/philaCitynews)

Contact us with HR questions

[hrhelpdesk@phila.gov](mailto:hrhelpdesk@phila.gov) or 215-686-0880

# Employee Resources

## Employee.phila.gov

Employee.phila.gov is a new online resource designed to support City employees. This hub brings together essential information in one easy-to-access location! Need details on benefits, workplace policies, or well-being programs? The hub site has you covered with clear, up-to-date information. The site also provides tools to help you share career opportunities with friends, family, and community members who may be interested in joining the City workforce. [Explore the page!](#)

### CITY RESOURCE GROUP MEETINGS

City Resource Groups (CRGs) create employee-led spaces to support diverse communities and allies, helping make the City a more inclusive workplace. CRGs offer networking, leadership opportunities, and skill-building through professional development. Members also collaborate with the Office of DEI to support departmental diversity goals. Learn more about CRGs or email [CRG@phila.gov](mailto:CRG@phila.gov) to join or get involved.

### CITYWIDE IT TRAINING

The Office of Innovation & Technology contracts with several vendors to provide information technology training. This is available on site, hands-on, and interactively to all City Departments. The Order Form and the Course Catalog are posted on the Office of Innovation and Technology Intranet, see [Forms and Document Page](#). Please note that all training requires the approval of both the department's authorized personnel and fiscal agent. [VIEW AVAILABLE COURSES](#)

### LANGUAGE ACCESS PHILLY

All City departments must have a Language Access Plan (LAP) to ensure residents with non-English language preference (NELP) can access services for free.

Language Access Philly connects departments with interpretation and translation services to support multilingual communities. Need help? Contact your Language Access Coordinator or [visit the Language Access Philly resource page](#).

### RESIDENT ENGAGEMENT FUND

**Resident Engagement Fund:** City departments seeking funding to pay residents during community engagement activities can apply through the Resident Engagement Fund, administered by the Office of the Chief Administrative Officer. [LINK HERE](#) or email [ResidentComp@phila.gov](mailto:ResidentComp@phila.gov)

### DISABILITY ACCESS RESOURCES

The City of Philadelphia is committed to making City services accessible to all residents, including people with disabilities. Through policies, programs, and resources, the Office for People with Disabilities works to support inclusion and access. Explore accessible spaces, disability data, systems navigation videos, and key policies. Learn more on [the website](#) and contact the Office for support.

### CITY INTRANET

Receive updates and access City resources like central duplication, an updated org chart, and updates on employee benefits and programs! All announcements listed here are also posted to the City's Intranet. Please note, you must be connected to either City Wi-Fi, LAN, or through approved VPN to access. [CHECK IT OUT](#)

### READYPHILADELPHIA

Stay connected to the weather forecast and important information from the City, directly to your phone! The city's emergency notification system is now available in 11 languages including American Sign Language. Text READYPHILA to 888777 to receive alerts to your device or sign up with your preferred language by visiting our ReadyPhiladelphia [webpage](#) for phone and text alerts. [SIGN UP FOR ALERTS](#)

### CITY COLLEGE FOR MUNICIPAL EMPLOYMENT

Have you seen the new homepage for the City College for Municipal Employment? Check it out on [phila.gov](http://phila.gov) and explore some of the options and details! <https://www.phila.gov/programs/city-college-for-municipal-employment-ccme/>

### LEARNING MANAGEMENT SYSTEM

NEW self-care and mental health resources for employees coping with the impact of COVID-19 are now available on the LMS, in addition to a variety of training and career development resources. Simply visit the Knowledge Base on the LMS for more information on COVID-19 Employee Self-Care. [ACCESS THE LMS](#)

### DISCLAIMER

This is a citywide newsletter, distributed to all employees with a [phila.gov](http://phila.gov) email address. Attendance at events during work hours must be approved by your supervisor. Occasionally, some information you receive may be applicable only to a certain group of employees, like exempts. We will clearly label such information, but if you have questions, please contact your HR administrator. Any special citywide discounts have been approved in advance by the Chief Integrity Officer and are available to all City employees who are interested.

Reference in this newsletter to any specific commercial product, process, or service, or the use of any trade, firm or corporation name is for the information and convenience of City employees, and does not constitute endorsement, recommendation, or favoring by the City of Philadelphia.